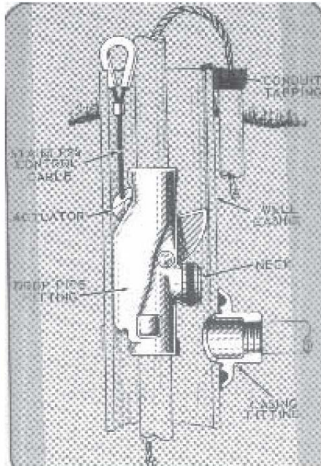
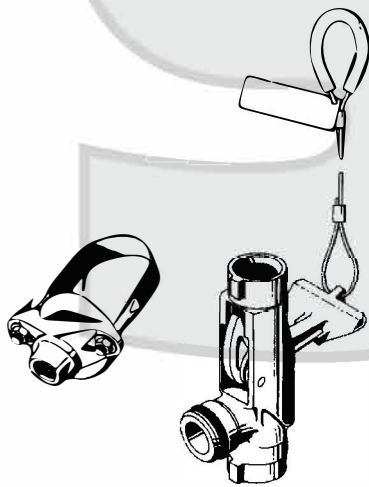


***SNAPPY* PITLESS ADAPTERS
 LESS CAP**



	I.D.	Hole Size	List
4" x 1" Steel	4"	2 3/8"	\$446.00
4 1/2" x 1" PVC	4 1/2"	2 3/8"	\$440.00
5" x 1" Steel	5"	2 3/8"	\$444.00
5 3/16" x 1" Steel	5 3/16"	2 3/8"	\$449.00
5 3/16" x 6" x 1" PVC	5 3/16"	2 3/8"	\$474.00
6" x 1" Steel	6"	2 3/8"	\$453.00
6 1/4" x 1"	6 1/4"	2 3/8"	\$473.00
5" x 1 1/4"	5"	2 3/8"	\$474.00
6" x 1 1/4"	6"	2 3/8"	\$480.00
6 1/4" x 1 1/4"	6 1/4"	2 3/8"	\$499.00



BRASS *SNAPPY* BULLDOG PITLESS ADAPTER

4A0	4" x 1"	\$689.00
5A0	5" x 1"	\$697.00
6A0	6" x 1"	\$731.00

***SNAPPY* CAPS**



4 V	Snappy PK 144 (4 & 4 1/4 x 1)	\$ 100.00
5 V	Snappy PK 155 (4 1/2, 5, 5 3/16 x 1)	\$116.00
5.6 V	Snappy PK 226.5 (5 3/16 x 6 x 1)	\$119.00
6 V	Snappy PK 146 (6 x 1)	\$119.00
6.6 V	Snappy PK 227.6 (6 5/8 x 1)	\$147.00

PRICES SUBJECT TO CHANGE WITHOUT NOTICE

PITLESS ADAPTERS

MAASS CLAMP ON PITLESS ADAPTER

MODEL	PIPE	DROP	O.D.	LIST
50DJC1	1"	1"	5"	\$363.00
5JC1	1"	1"	5 9/16"	\$363.00
60DJC1	1"	1"	6"	\$383.00
6JC1	1"	1"	6 5/8"	\$383.00



MAASS WELD ON PITLESS ADAPTER

MODEL	PIPE	DROP	I.D.	LIST
5J2	2"	2"	5"	\$710

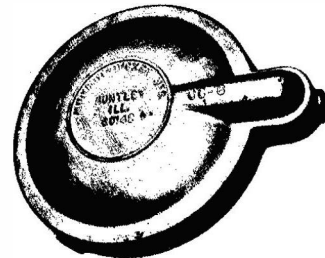


CLEARWAY PITLESS ADAPTER

CW4-10WA				\$372.00
----------	--	--	--	----------

VENT CAPS

Model		O.D. Casing	List
CC4.5	Aluminum	5"	\$52.00
CC5	Aluminum	5 9/16"	\$47.00
CC5.6	Aluminum	6"	\$52.00
CC6	Aluminum	6 5/8"	\$53.00
CC6-6	Aluminum	7"	\$48.35
6PT1	Poly	6 5/8"	\$137.00



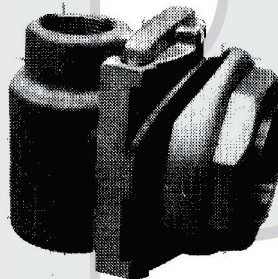


**MERRILL RED BRASS PITLESS ADAPTERS
 (LESS CAP)**

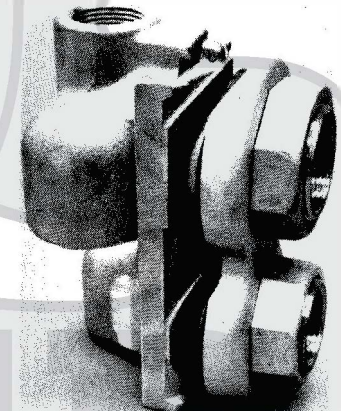
Model #	Tapped	Hole Saw Size	Casing Size	WT.	List
MB200	1"	1 3/4"	5" & up	2	\$137.00
MB225	1 1/4"	2 1/4"	5" & up	4	\$191.00
P100-CT		Concrete Casing			\$313.40
SSMB200	1"	Stainless Steel			\$146.00
SSMB225	1 1/4"	Stainless Steel			\$211.00



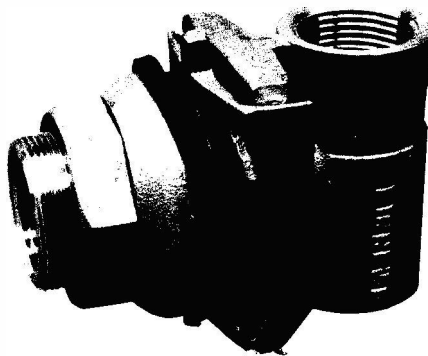
MB225



MHB300



MHB400 Jet Pitless Adapter



MB200

